

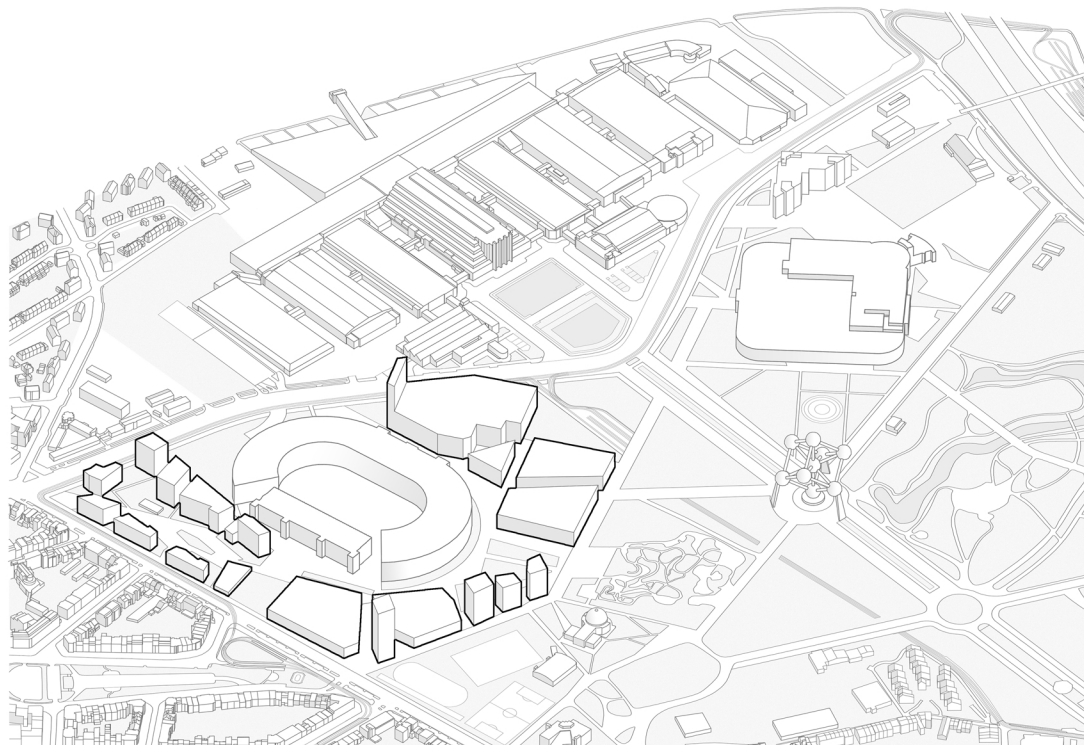
THE HEYSEL STADIUM  
AN ALTERNATIVE APPROACH

# PLANNING THE FUTURE OF THE HEYSEL PLATEAU

Following the competition started by the Royal Belgian Football Association and the Memorial Van Damme to renovate the King Baudouin stadium, the question of the upcoming fate of Brussel's Heysel plateau has been once again put on the table.

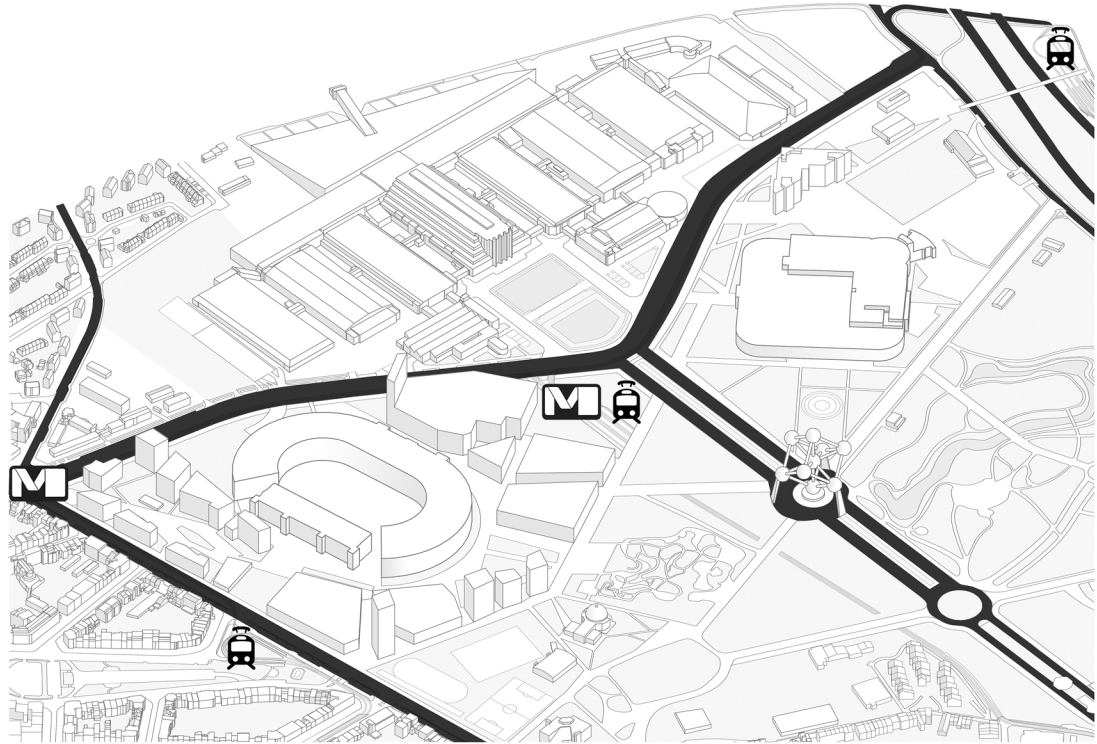
While versatile, the King Baudouin stadium presents a number of problems in regard to renovation costs and location. We then have to reconsider the question asked : what would be more durable and profitable over time for the plateau and therefore, the city?

As an alternative approach to the complex situation at hand, we are exploring the possibility of building the stadium anew on the other side of the plateau by replacing the Trade Mart Brussels and reorganizing its plot. This allows to overcome the many monetary and urbanistic obstacles presented by the current stadium's site.

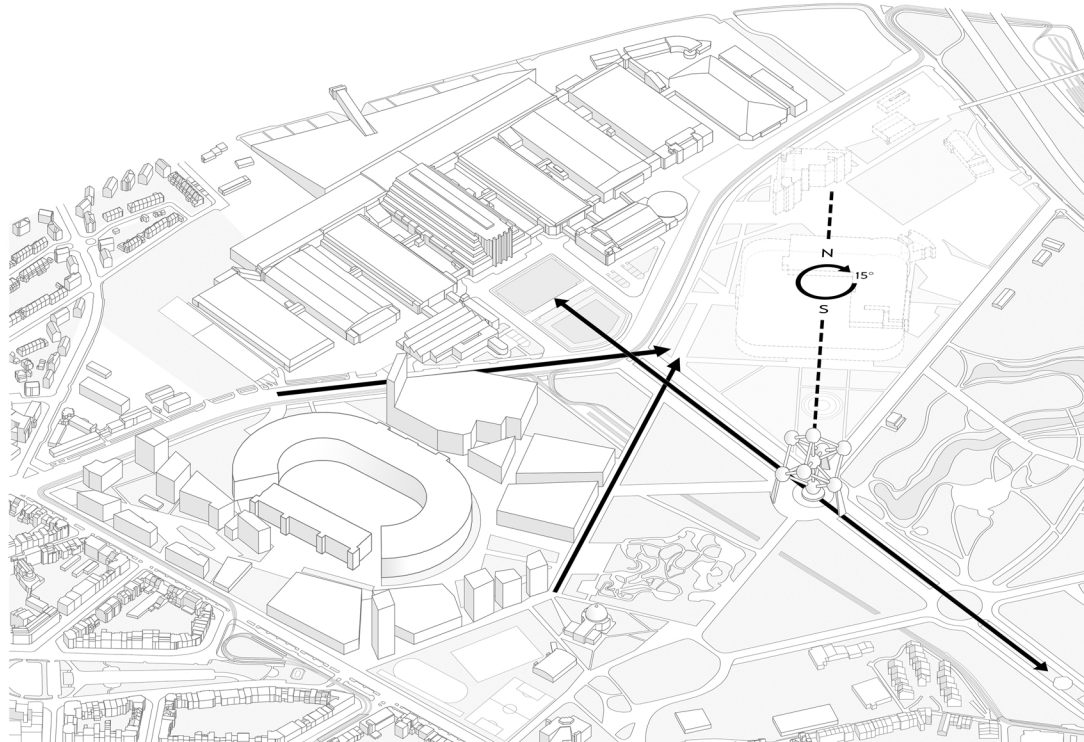


## SITE

Located in the north of Brussels, the plateau is subject to major upcoming changes, as the Neo projects, which include dwellings as well as public infrastructures, should come to fruition in the near future.

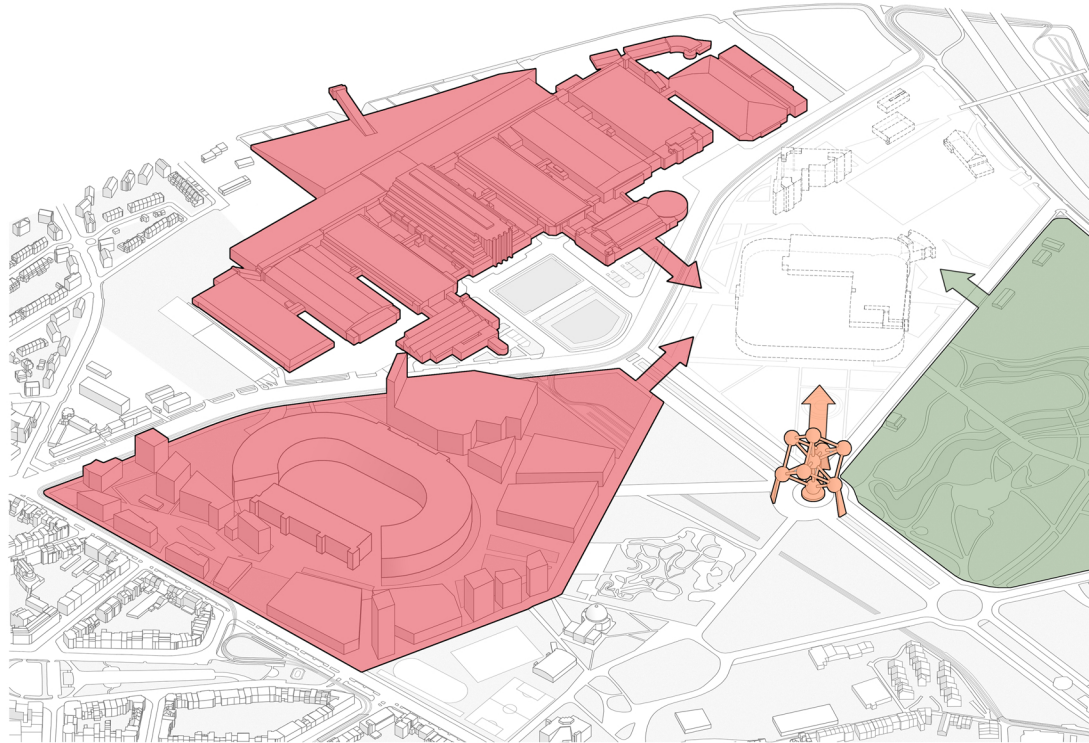


ACCESSIBILITY



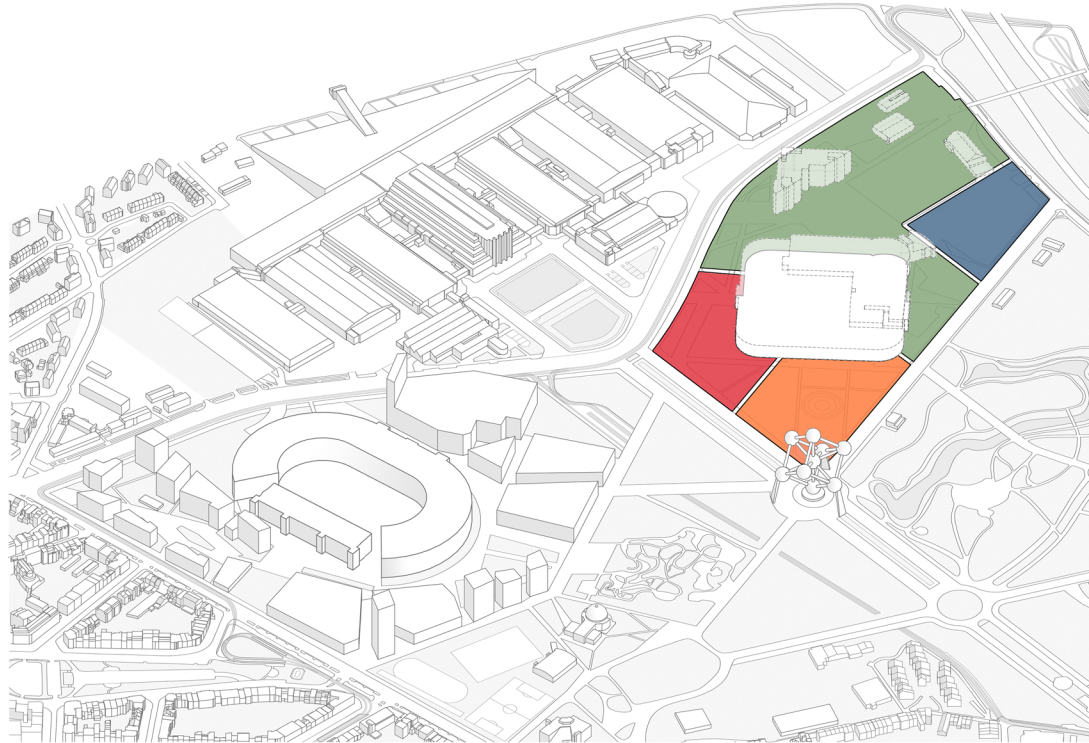
## AXES

The alignment of the Atomium and the Brussels expo greatly defines the plateau. Meeting points, as well as the 15° rotation needed for the stadium's exposure, serve as primary criterias for positioning the project on the plot.



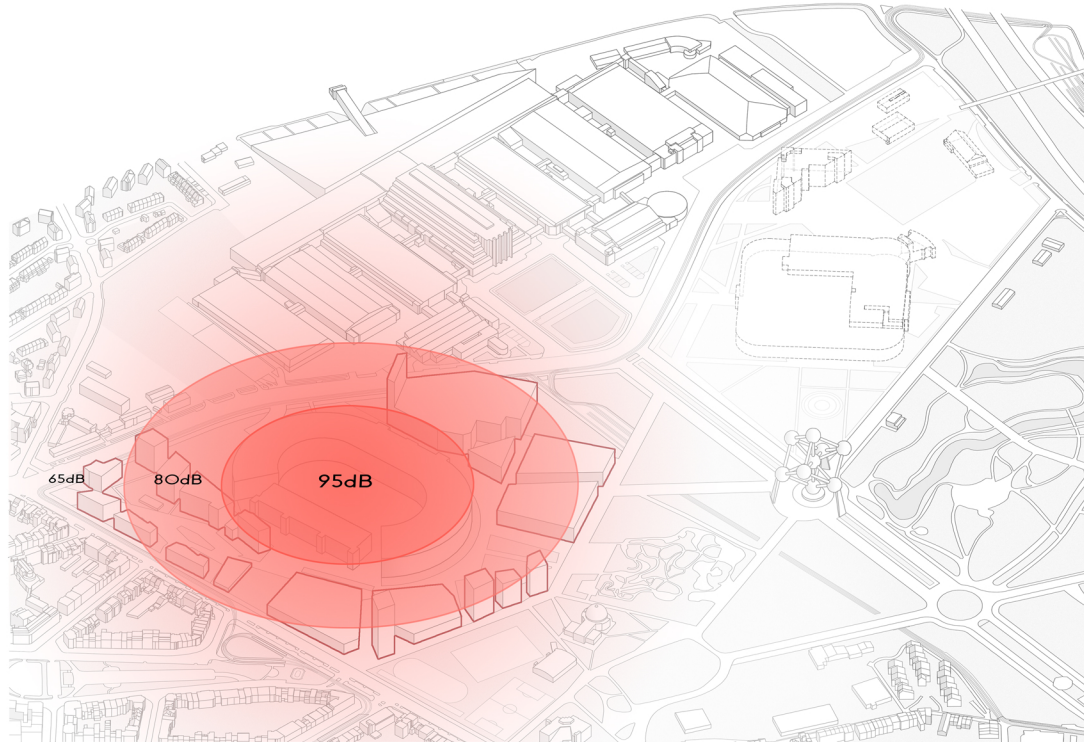
## INTERACTING WITH THE SITE

To avoid creating a disconnect between the future stadium and the site's landmarks, a link is established between them so that the former serves as an interface, as opposed to a barrier.



## DEFINING THE PLOT

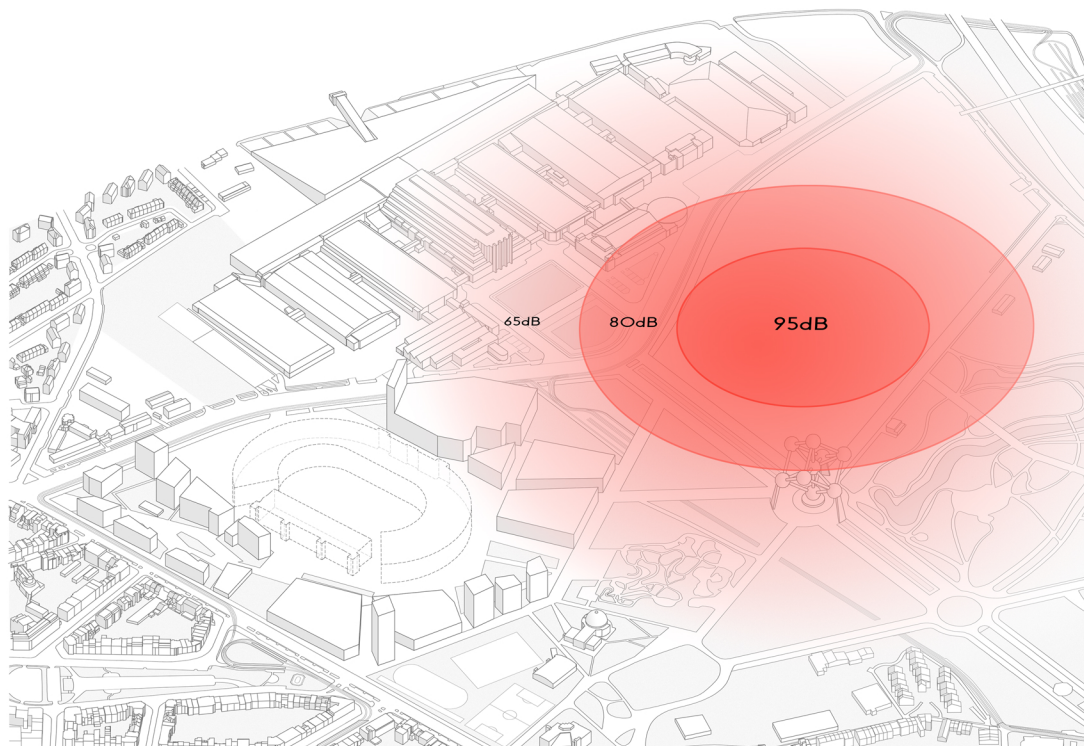
Acknowledging the site's landmarks allows to define different types of areas of interest on the plot.



## SOUND : KING BAUDOIN

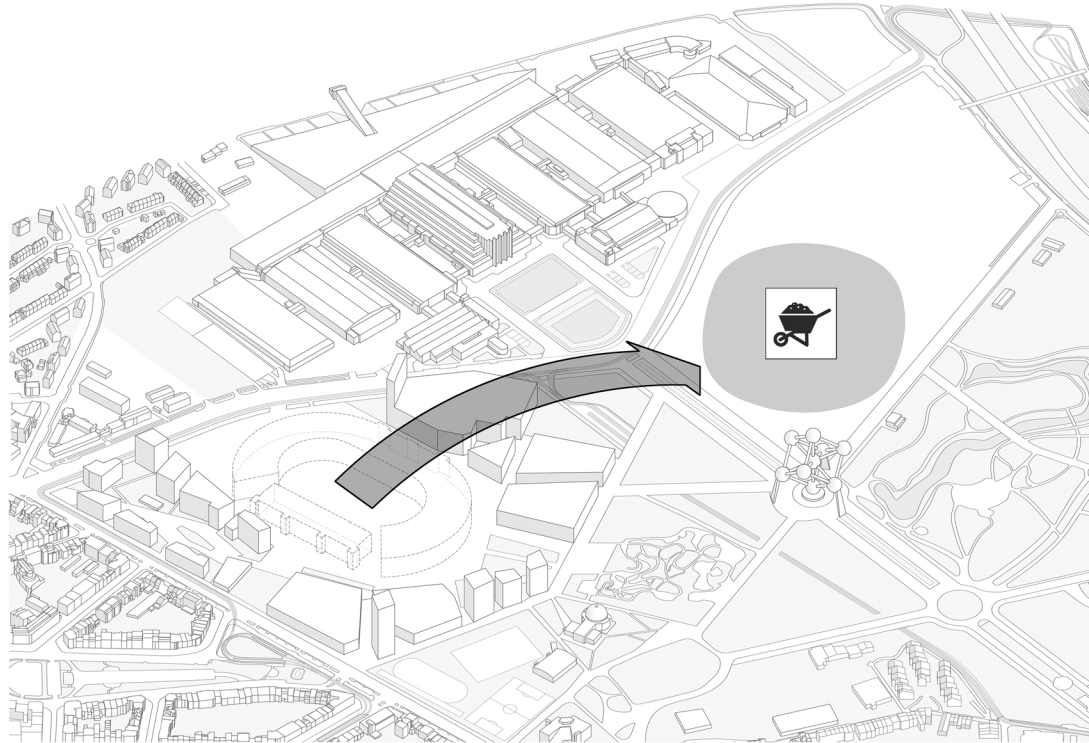
On the former stadium's site, sound is a concerning issue for the future Neo projects considering the presence of dwellings within the 95dB area during events. Consequently, a contract has been signed to limit the amount of events per year to 10.





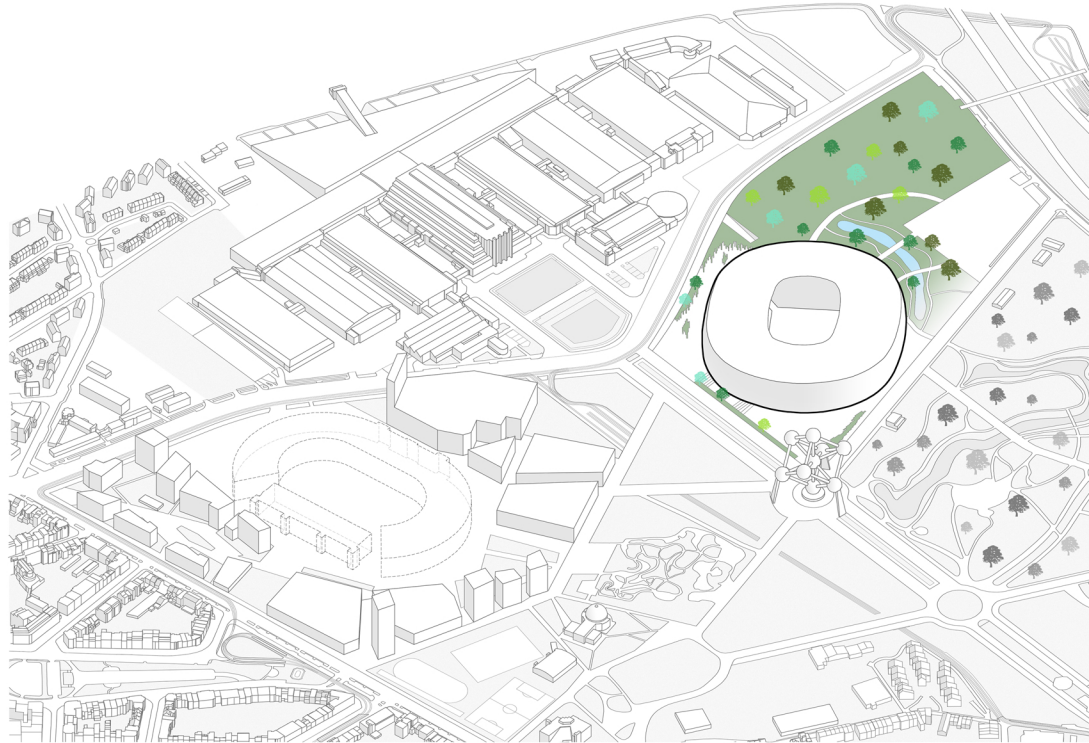
## SOUND : TRADE MART'S PLOT

Contrary to the King Baudouin's site, this new plot doesn't disrupt any dwellings.



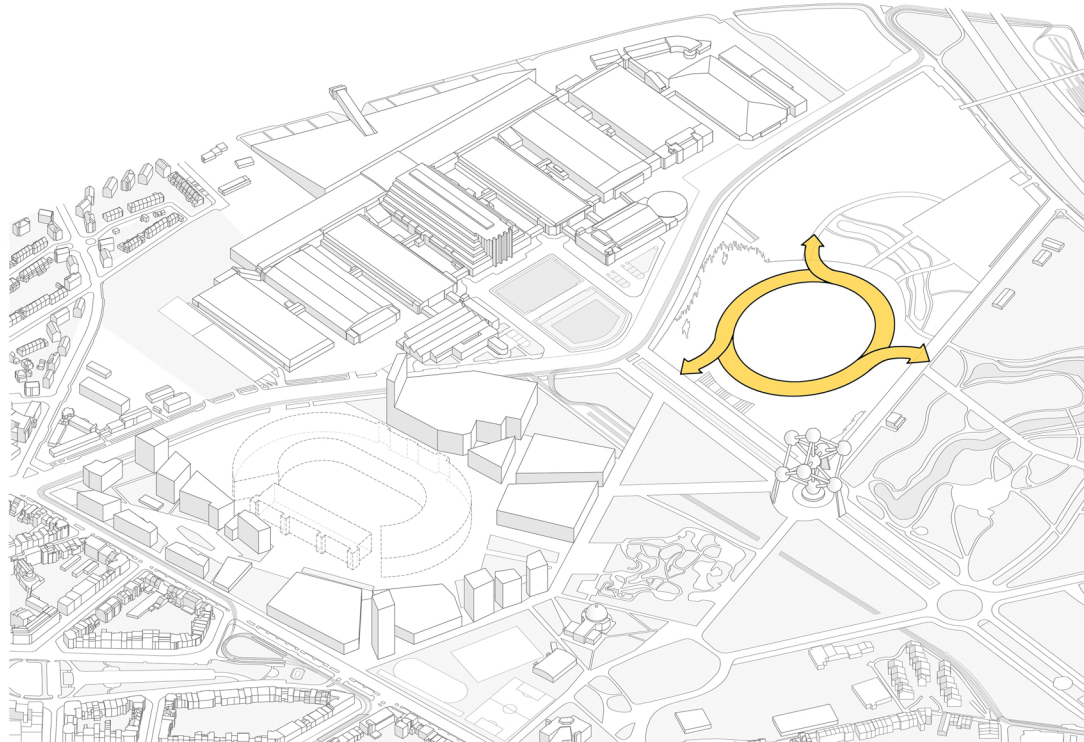
## SUSTAINABLE DEVELOPMENT

The past stadium's remains can be used for the construction, making use of its proximity to minimize transportation costs.



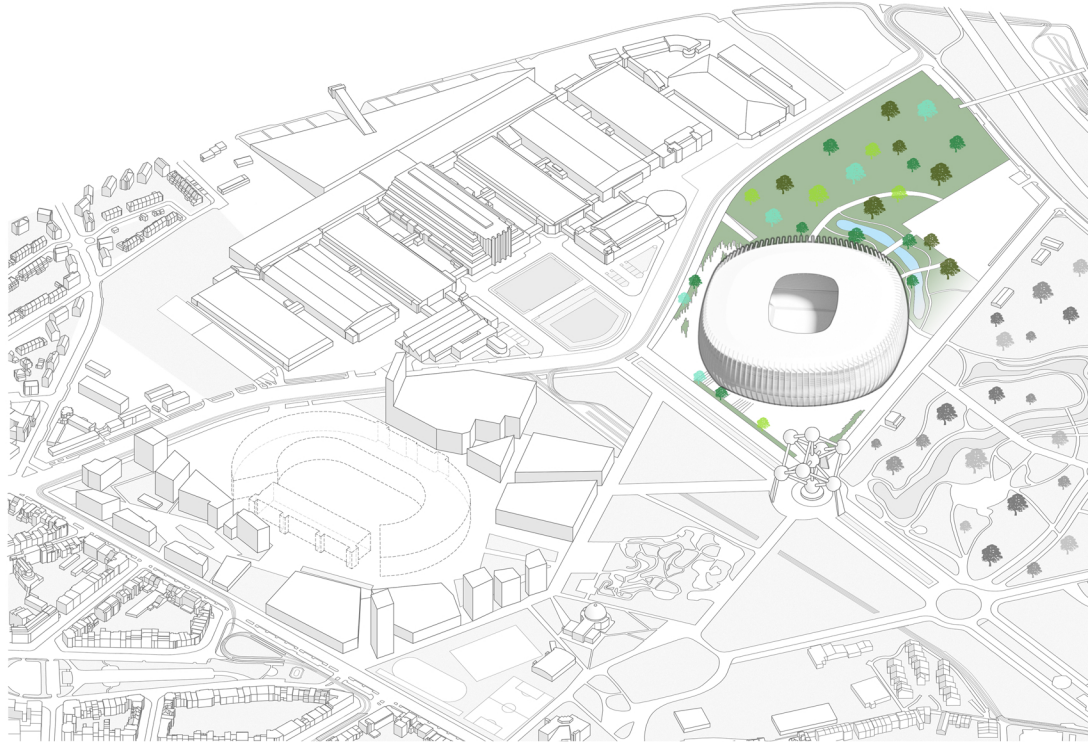
## FIRST ON-SITE VOLUME

Being linked to the Ossegem's park plays a major role in the plot's organization.



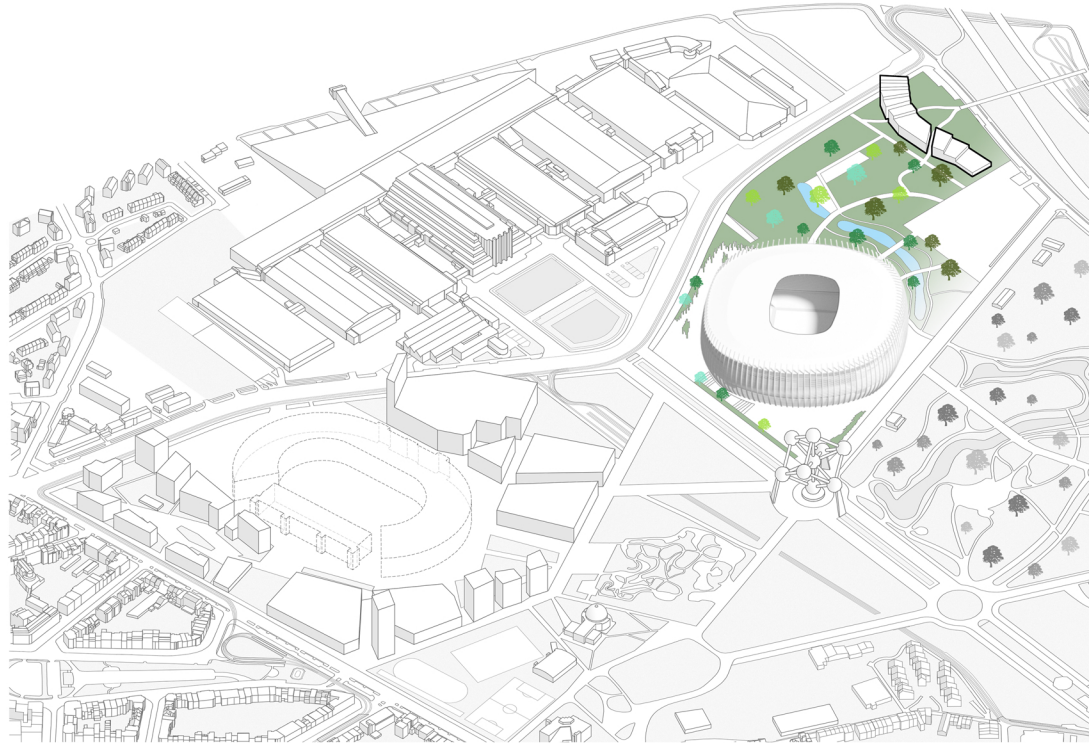
## THE STADIUM AS AN INTERFACE

For the stadium to be active throughout the year, even outside of events, it needs to allow a constant circulation within itself. This lets businesses thrive and people use the stadium as an interface on the plateau.



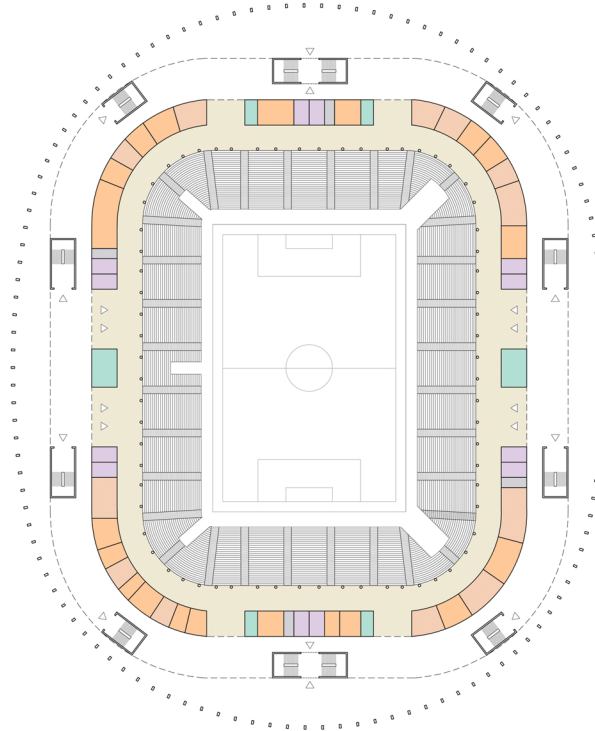
## GOING IN AND OUT

A system of columns joined by claddings allows for an 'in-between' space within the stadium.



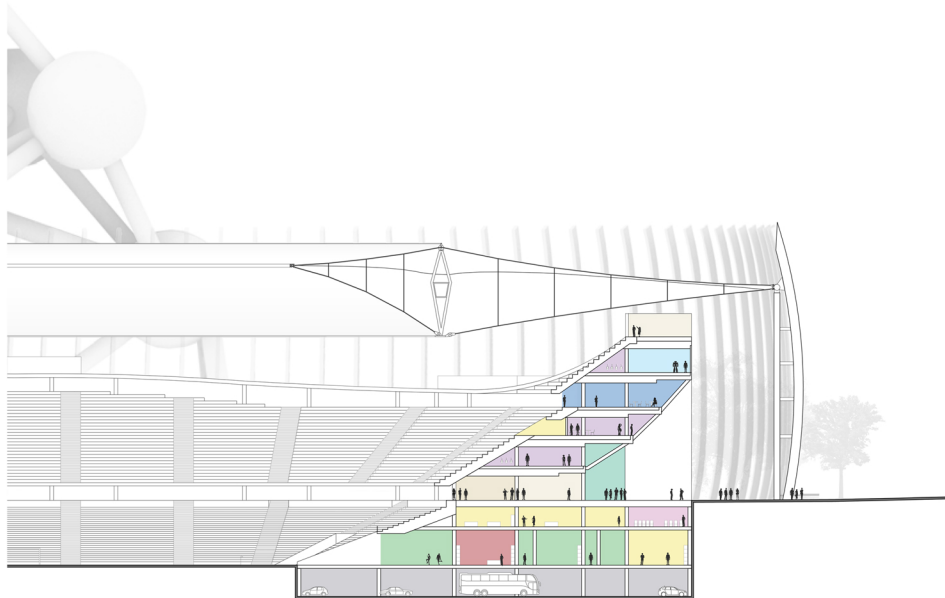
## RETHINKING THE PLOT

A sports center and a hotel are added to the plot to complement the stadium. It creates an additional incentive for people to circulate within the plot, as well as a closure to the park.



- Competitions
- Ceremonies
- Hospitality
- VIP / VVIP
- Ticket counter
- Commercial display
- Services
- Media
- Spectators
- Medical assistance
- Logistics

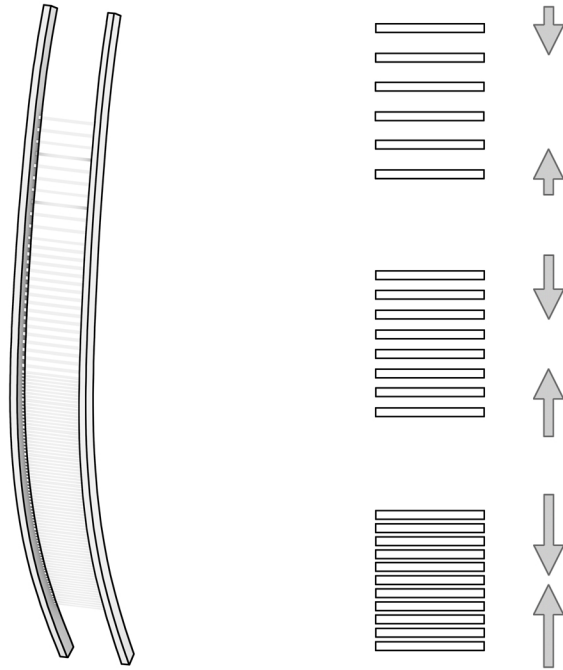
GROUND LEVEL



- Competitions
- Ceremonies
- Hospitality
- VIP / VVIP
- Ticket counter
- Commercial display
- Services
- Media
- Spectators
- Medical assistance
- Logistics

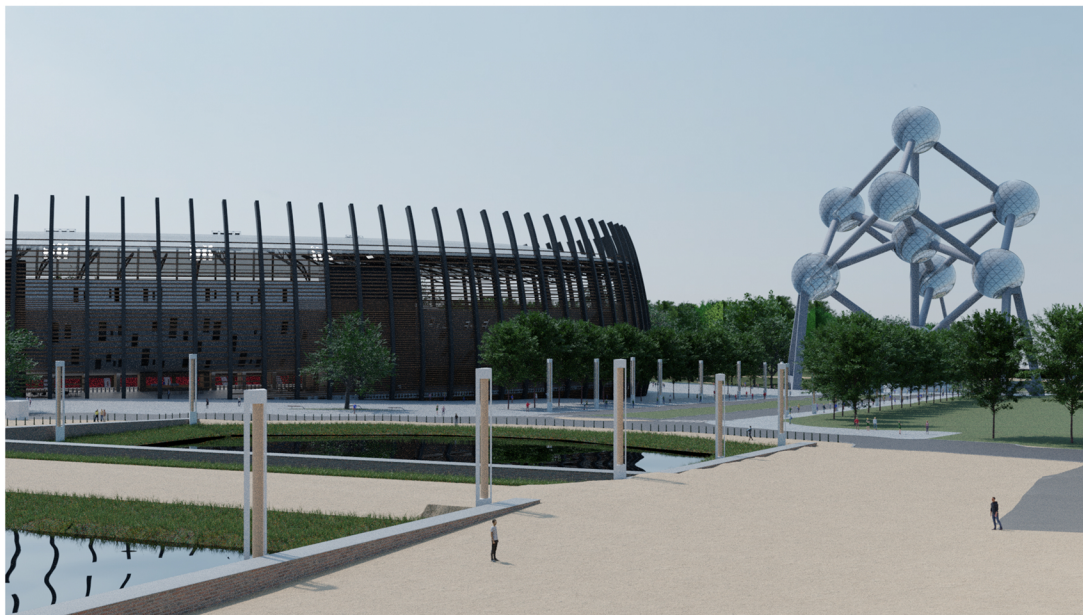
## TRANSVERSE SECTION

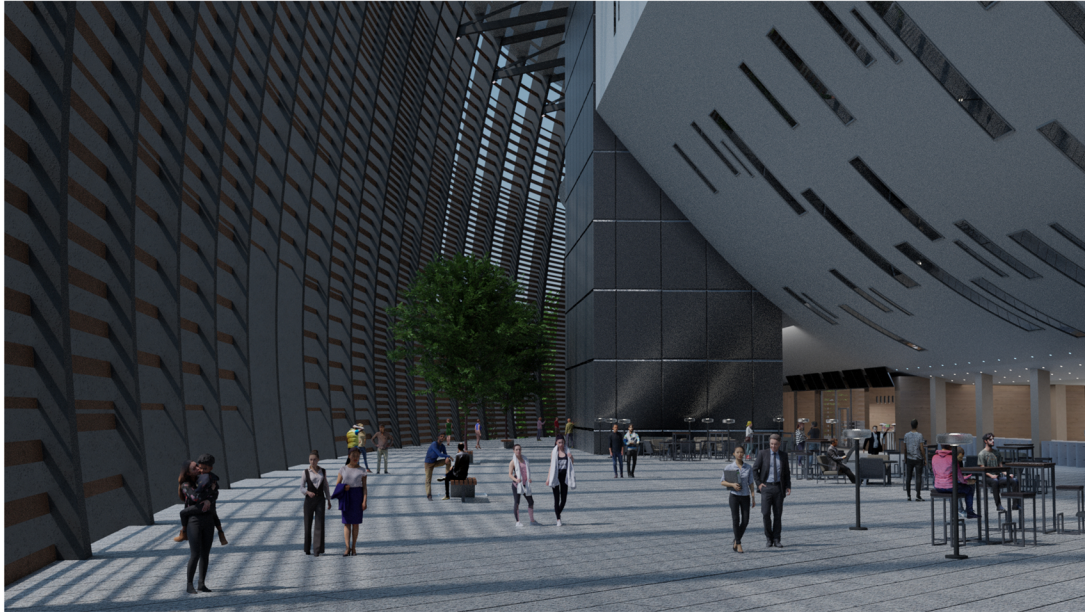




## CLADDING SYSTEM

Depending on the inner function's needs, the spacing of the claddings varies.











21



**ULB** - FACULTY OF ARCHITECTURE LA CAMBRE HORTA  
CHARINET Guillaume. GIGNAC Timothée. LÉONARD Martin